

SMS Wipe

App Manual (En)



Version 13

@2017 - ZAMAX PRODUCTION

In Google play:

[SMS Wipe Backup Restore Free](#)

[SMS Wipe Backup and Restore Pro](#)

Web Site: <https://smswipe.wordpress.com/>

See the APPENDIX D at the end of the Manual about Privacy Policy and Legal Terms

Sommario

SMS Wipe	1
App Manual.....	1
Key features: (**).....	3
Functions in details	4
SMS Filtering	4
Operative Center.....	6
WRITE a new SMS	7
Settings Dialog	9
SMS Forwarding to email.....	10
SMS Forwarding to another mobile phone.....	12
Autoreply	13
SMS Remote Control Settings.....	14
Alarm – Movement Detection – GPS tracking	15
Schedule.....	17
Mobiles Control.....	18
Remote Control Phone.....	19
SMS Formatting.....	20
SMS Codes.....	23
APPENDIX A -	24
Android Phones, Tablets and Watches which Receive Accelerometer Events in Standby (with the Screen Off)	24
Devices which Work.....	24
Android Phones, Tablets and Watches which do not Receive Accelerometer Events in Standby (with the Screen Off)	25
Devices which Don't Work Properly.....	25
APPENDIX B – SMS Wipe Free: Functionality Limitations.....	28
SWM Wipe Free Version – Limitations	29
APPENDIX C – Mobile Permissions Requested	30
APPENDIX D – Privacy and Legal Terms	32
Privacy Policy	32
Legal Terms.....	33

Key features: (**)

- **SMS filtering:** Filter your SMS using number, date, text inside SMS, contact name.
- **Deleting all:** Delete all the SMS filtered and if you change idea, you can undo the command.
- **Full Backup and Restore:** Create your full backup of your SMS. In this way you never lost them.
- **Export/Import:** Export all your SMS in a CSV file. So you can open and see your SMS using Excel or any CSV reader. Besides you can move the Backup export in another mobile phone and import your SMS.
- **Express yourself:** You can send and receive emoji 😊, and the max length of your message is automatic update, to show you the remaining chars available to compose the SMS.
- **SMS single and multipart:** You can decide if you want to write only one SMS with 160 chars, or multi-parts SMS with 918 chars. The max number of chars is automatic updated taking into accounts if the SMS contains special chars (emoji or other non-standard chars) or not.
- **Forward SMS:** Send your received SMS to your email, or to another mobile phone.
- **Autoreply:** When you can't immediately reply to your contacts, you can set an autoreply message to advice your contact.
- **Remotely control an Android Phone:** If you install this app in the phone, you can have the remote control of the phone via SMS. You can set a password to control the remote phone and to access to the Remote Control Settings.
- **Alarm and Movement Detection (*):** You can detect when an Android Mobile Phone is moved and you can activate an Alarm. An advanced algorithm allows you to calibrate the movement sensor, so to obtain a high movement sensibility. You receive an email to advice about the alarm event.
- **GPS tracking:** You can detect when the Android Phone is moved and you can trace the positions. You can get the updated positions via email and you can export the positions file to your pc or you can open it in your mobile phone with an App that can read .csv file.
- **Scheduling:** You can schedule to send your SMS.
- **LOG history:** Check the history of the commands executed with SMS Wipe and the events about its functions.
- **SMS translation:** When you read an SMS, you can translate it.

Attention: To run properly this app sends SMS. Take into account that most Mobile Operators provides the SMS service to fee. The cost of each SMS depends by your Mobile Operator. Please check your rate plan. A little Internet Traffic (some kilobytes) is used to send emails to you for some functionalities: Remote Photo Captures, Alarm notifications, GPS positions.

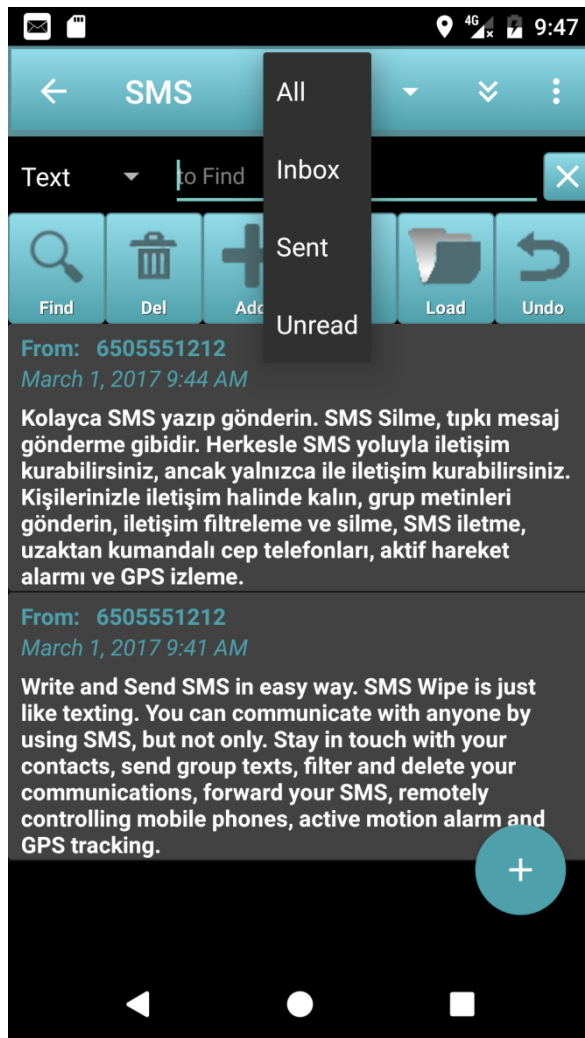
(*) Not all Android Phones allows this function when the display is off. For this reason, there is an option that allows you to have the display always on to use this function when you need. Please check the list of the supported mobile phones if you are interested (Appendix A).

(**) To know the functionality limitations of the Version Free of the App, please read Appendix B.

Functions in details

SMS Filtering

Choose the folder to filter: All, Inbox, Sent, Unread.



All: all SMS: sent and received SMS

Inbox: all received SMS

Sent: all sent SMS

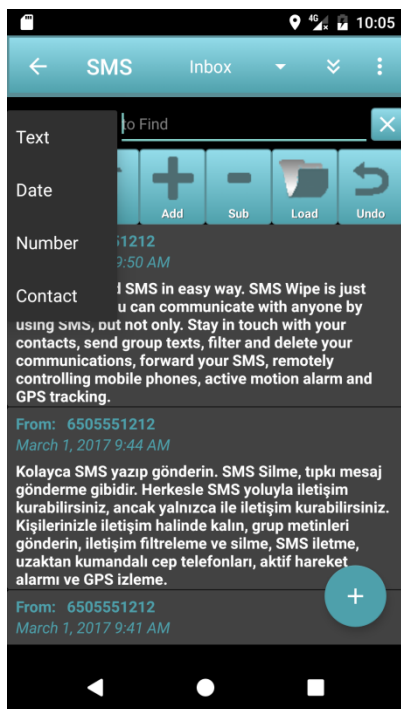
Unread: all unread SMS

For each folder you can apply the filter selecting the combo-box in the left. The default filter is Text.

If the "Text to find" field is empty, no filter is applied.

To refresh the SMS list, press the Find button.

The type of filter that you can apply is: Text, Date, Phone Number or Contact Name.



Text: Filter SMS that contain specific words. You can write the words in the “Text to find” field or you can load the words from your favorites words pressing the Load button.

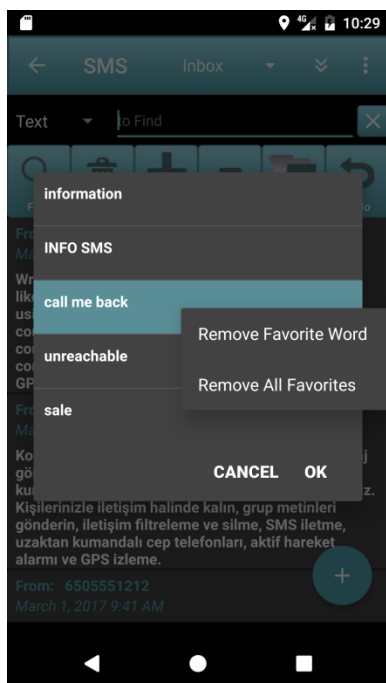
If you want to add new favorite words you can press the Add Button. To remove favorite words press Sub Button.

To manage the favorite words, you can press the Load button and choice the words with a long tap to see the context options. See the figure below.

Date: Filter SMS in a specific date. Insert the date in “Text to find” field. For example, you can write “March 2017” to have all SMS of March. If you write “1 March 2017” you get all SMS of this day and so on.

Number: Filter SMS with a phone number that contains the number inserted in “Text to find” field. For example, you can insert “55512” to get SMS with To/From Field with a number that contains “55512”.

Contact: Filter SMS that have a Contact Name in the Phone Book that contains the name inserted in the “Text to find” field.



Load Favorite Words – Context Menu

This Dialog appears if you press the Load Button.

Remove a specific favorite word.

Remove all favorite words.

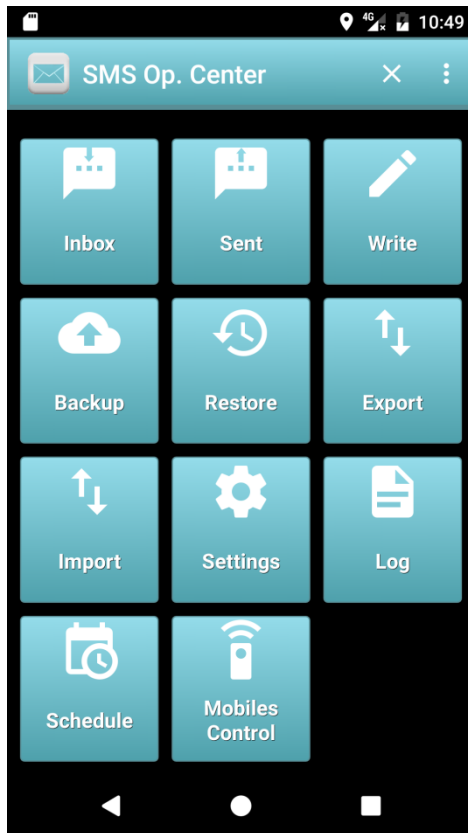
If you press the Delete Button, you delete all SMS in the list. But don't worry, because you can reverse the command pressing the Undo Button.

Attention:

In any case take into account to apply sometimes a full backup and to export it in an external support to have always a secure backup of your SMS, to avoid losing them in case of Phone malfunctions or crash.

Operative Center

This is the dialog to control the SMS Wipe Functionalities.



Inbox: To open the list of the received SMS.

Sent: To open the list of sent SMS.

Write: To write a new SMS.

Backup: To backup all SMS.

Restore: To restore the last full backup executed.

Export: Export the full Backup to the phone external storage: "emulated/0/SMSwipe" folder.

Import: Put your last exported backup in "emulated/0/SMSwipe" and press the Import button to import all SMS in the backup file.

Settings: SMS Wipe settings.

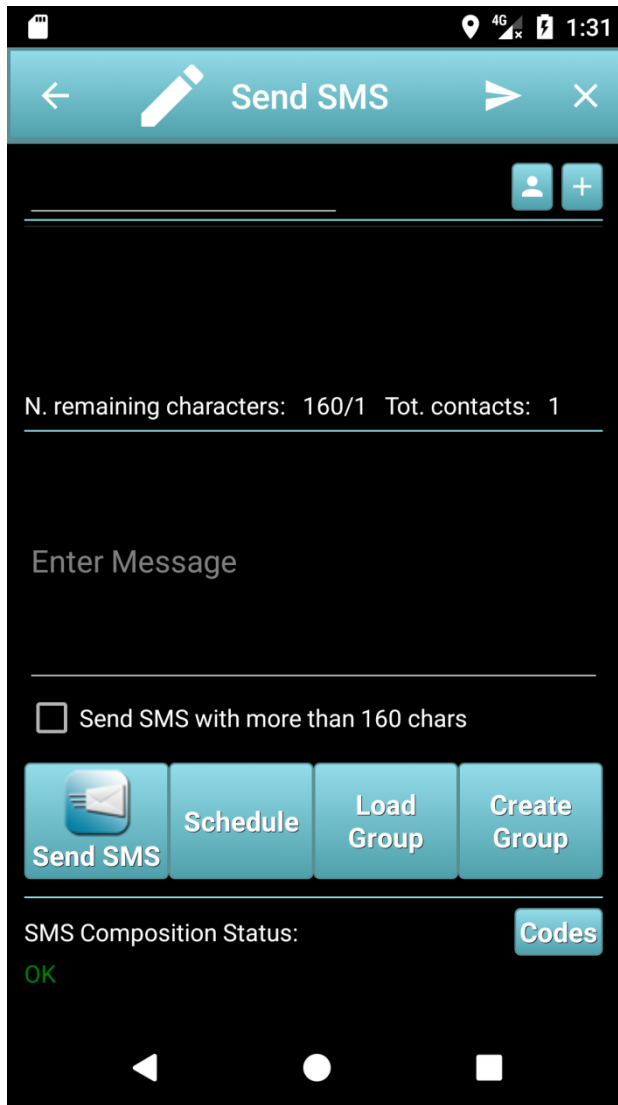
Log: History of App commands/events.

Schedule: Schedule when your SMS shall be sent.

Mobiles Control: manage the list of mobile phones that you want to control, and access to their Remote Control Panel. This function will be described in the next paragraph.

WRITE a new SMS

This Dialog allows you to write a new SMS. You can have one or more recipients; you shall only fill the list of recipients.



The panel shows you the remaining characters that you can insert in your SMS. The default for only one SMS is 160. If you press the option “Send SMS with more than 160 chars” you can write a multi-parts SMS. In this case the max length is 918, but takes into account that in this case is not sent only one SMS but more than one. Then if your operator applies a fee to this service, please take in consideration that you will pay for more than one SMS. The number of SMS really sent is specified in the dialog after the number of remaining characters, immediately after the char /.

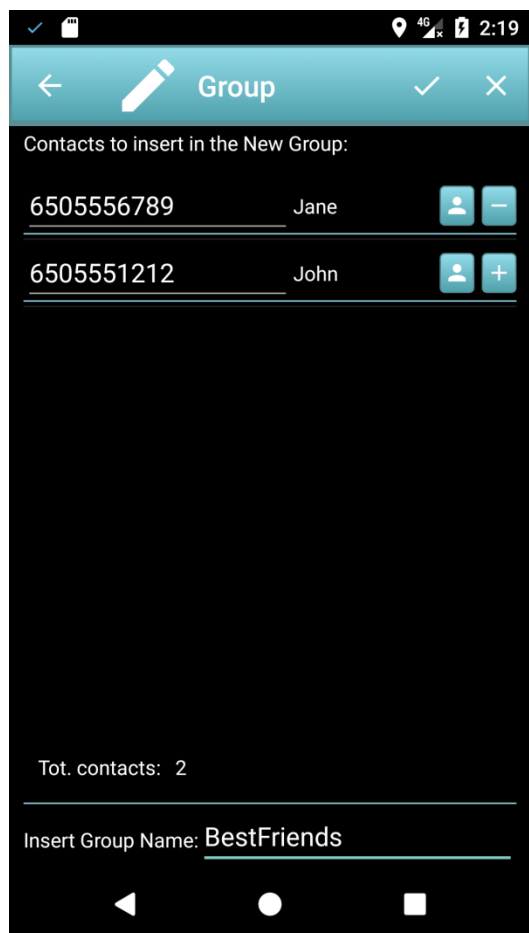
To fill the recipients list you can use your predefined groups pressing the “Load Group” button.

To send the SMS press the “Send SMS” button or the icon in the action bar.

If you want to schedule the SMS press the “Schedule Button” so you can choice when you want to send your SMS.

Attention: Your Mobile Phone Operator could apply a fee for each SMS. Please, check your rate plan.

To create a new predefined group, you can fill the recipients list and after you shall press the “Create Group” button. The Group Dialog is opened and you can modify the list and you can choice the Group Name.

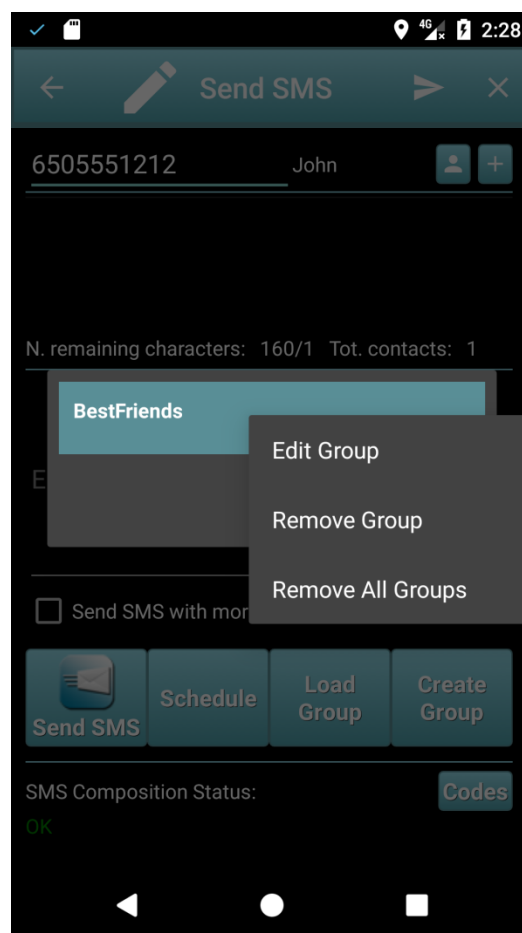


To confirm and save the new group you shall press the confirm icon in the action bar.

If you want to discard the changes press the X icon in the action bar.

After the group creation you can select and manage it pressing the “Load Group” button of the previous figure in the dialog “Send SMS”.

The “Load Group” Dialog is this:



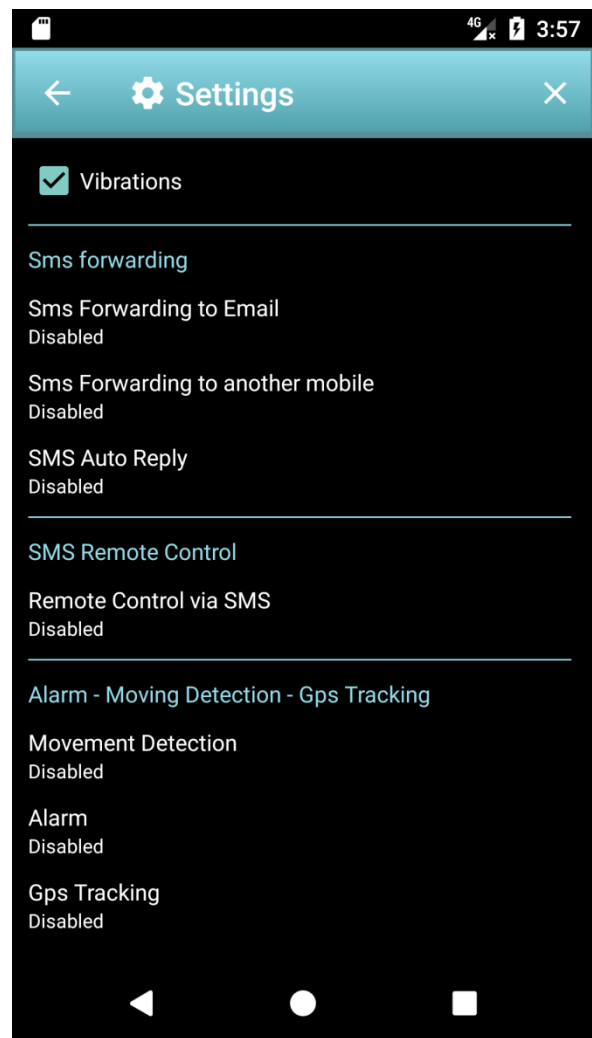
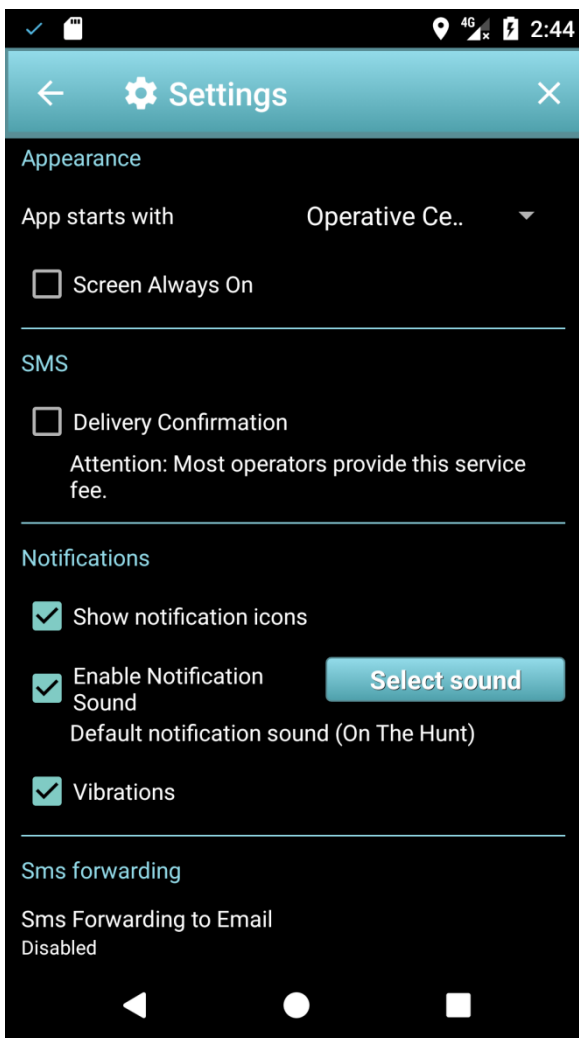
The context menu of the “Load Group” dialog allows you to edit and remove a group, or to remove all created groups.

Settings Dialog

Pressing the “Settings” button the Dialog of SMS Wipe Settings is opened to configure and to customize the App functionalities.

You can set:

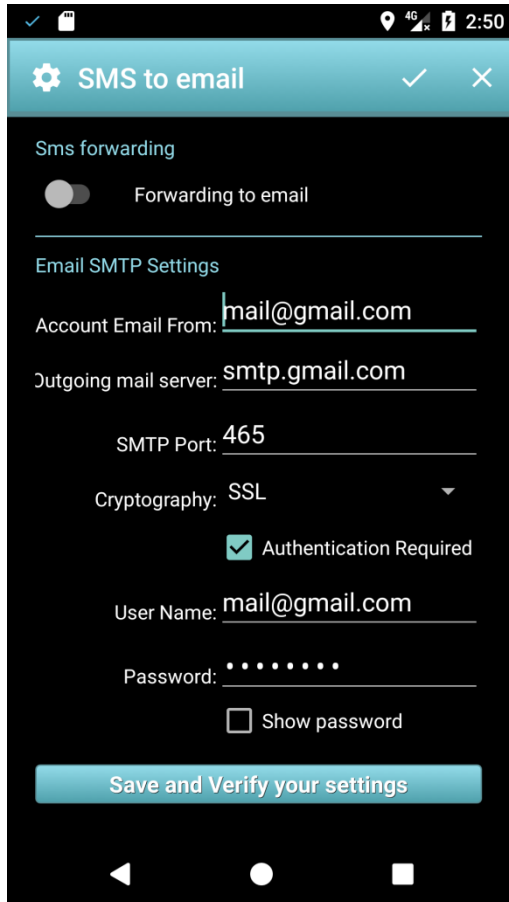
- Appearance
- SMS setting
- Notifications
- SMS forwarding
- SMS Remote Control
- Alarm – Moving Detection - GPS tracking



SMS Forwarding to email

This functionality allows you to forward the received SMS to your email.

To run properly you shall set your email account in the App.



The Switch “Forwarding to email” allows to enable or disable this functionality.

Account email: It shall be filled with your email address. For example “john.smith@gmail.com”.

Outgoing mail server: It is the SMTP mail server. In case of Gmail is already set to “smtp.gmail.com” and you shall not modify it.

SMTP port: It is the port to use for SMTP, that in case of Gmail is 465 and you shall not modify it.

Cryptography: It is the type of cryptography used by SMTP server. For Gmail is SSL. Don’t modify it.

User Name: Username to use for SMTP authentication. In case of Gmail is your email address, for example “john.smith@gmail.com”.

Password: It is your email password. To see what you digit please check the box “Show Password” and check what you have written

At the end, check if your settings are Ok pressing the “Save and Verify your settings”. So if your settings are right, you receive an email to your account email that advice you about the success of the App configuration.

Case of use:

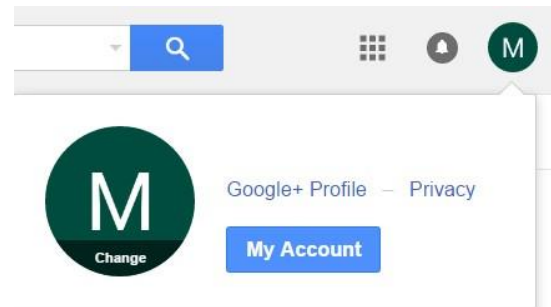
- You can use this functionality to read your SMS everywhere, also in the case that you haven’t your mobile phone with you.
- You can install the App in the phone of your sons to check the SMS received and sent, to control the phone Credit, and so on.

The access to these settings can be protected by password, using the Remote Control Settings. We see these settings later.

In case of Gmail, if you have inserted all correctly but you don't receive the email, the cause could be your security email configuration in your Gmail account.

To solve the problem, try this procedure:

- Open Gmail with your email account
- Select the item "My Account"
- Select "Access and Security" and a new Web Page is opened.
- Go to the end of this page and set "[Less secure apps](#)" to ON. In this way the App SMTP setting should run properly.

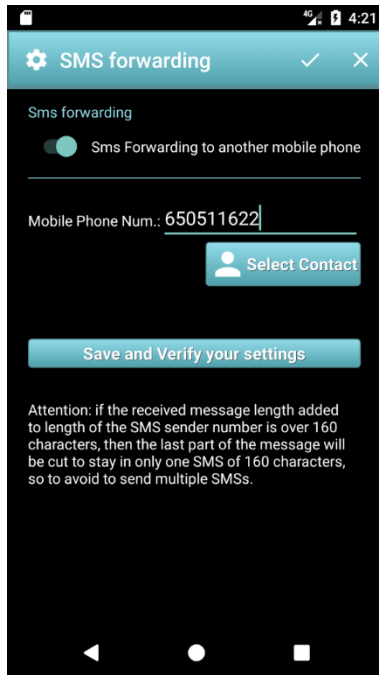


Attention: This functionality consumes some Kilobytes of Internet Traffic to forward your SMS via email, but the consumption is really low. In any case check your rate plan to know the costs of internet traffic.

If the issue persists, try to disable the double Google Authentication. About the Gmail configuration, read the GMAIL documentation to: <https://www.google.com/safetycenter/everyone/start/gmail/>

SMS Forwarding to another mobile phone

This functionality allows you to forward your SMS to another mobile phone.



The Switch “Forwarding to another mobile phone” allows you to enable or disable this functionality.

Mobile Phone Num: It’s the destination number of the mobile phone where you want to forward your SMS.

Save and Verify your settings: If you press this button an SMS is sent to destination mobile phone to verify your configuration.

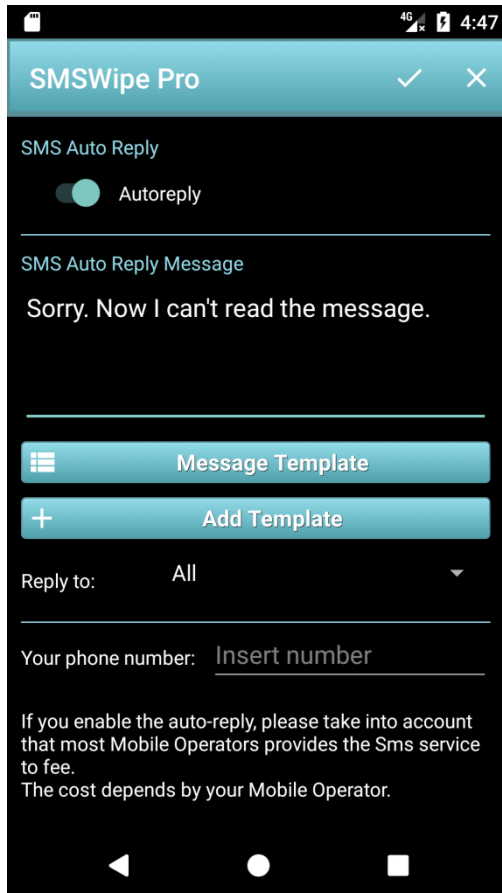
Case of use: if you want to forward SMS from your Job mobile phone to your personal mobile phone, you need install the App in the job mobile phone and configure the forwarding to mobile phone using your personal number. In the figure your personal number is 650511622.

Attention:

If you enable the forwarding, take into account that most Mobile Operators provides the SMS service to fee. The cost of each SMS depends by your Mobile Operator. Please check your rate plan.

Autoreply

This functionality allows you to autoreply to your received SMS, when you can't.



To enable the Autoreply, you shall press the switch “autoreply”.

SMS Auto Reply Message: It's the message that you want to use for replying. You can write it or you can use your message templates pressing the “Message Template” button.

You can decide to reply to all received SMS or only to the SMS that are in your book phone. Use the “Reply to” field.

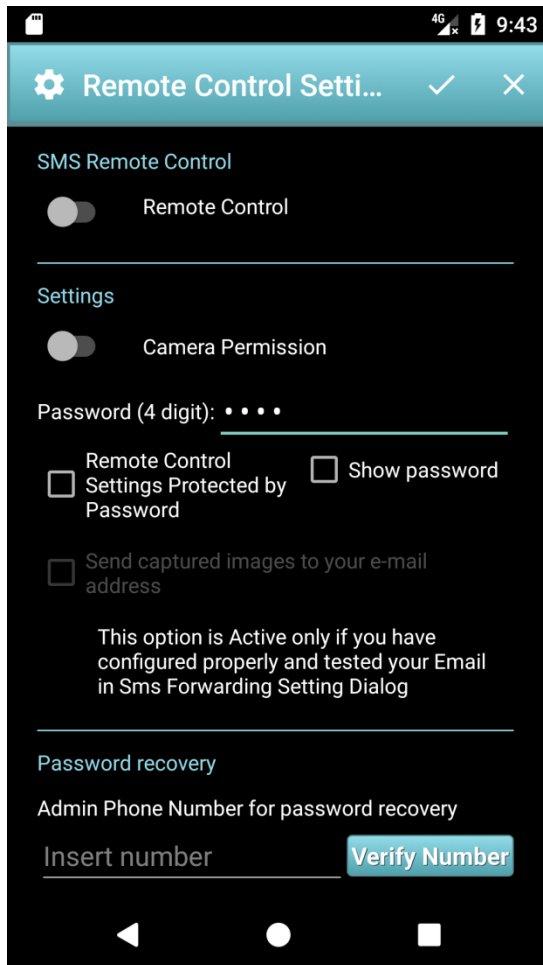
Your phone number: The number of your phone. It's used for the email notifications, and to avoid autoreply with yourself... because if not you can generate an infinite loop with App crashing.

Attention:

If you enable the autoreply, take into account that most Mobile Operators provides the SMS service to fee. The cost of each SMS depends by your Mobile Operator.

SMS Remote Control Settings

This functionality allows you to configure your Mobile Phone to control it remotely from another Mobile Phone via SMS.



Switch “Remote Control”: allows enabling or disabling this functionality in your phone.

Switch “Camera Permission”: allows enabling the Camera Permission to SMS Wipe, to allow to execute the Remote Photo Captures. If it is disabled, all camera commands are not executed.

Password: It is the password to execute the SMS remote commands. The default password is 0000. The password shall be a pin with 4 digits. For security reason I suggest you to change the default password, for example with your SIM password.

“Remote Control Settings Protected by Password”: If the checkbox is set, you enable the Login Control to access to “Remote Control Settings” and “Forward to email settings”. I suggest inserting a Phone Number to recover the password via SMS.

“Send captured images...”: If it is enabled, you can take a remote photo and you can receive it via email.

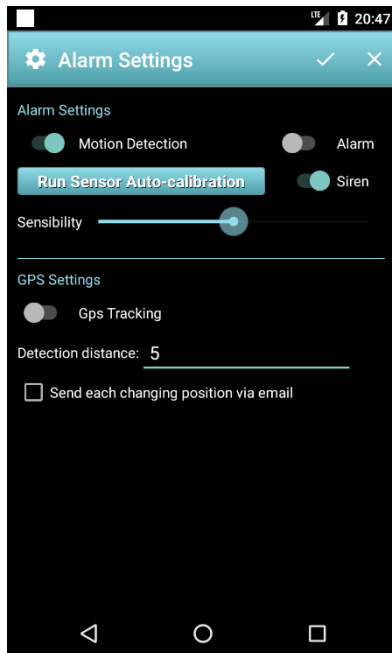
Case of use: if you install the SMS wipe in the Mobile Phones of your sons, you can remote control of these mobile phones:

- You can get sound from the remote phone, also in the case if the remote phone is in silent mode. In this way you can find it in an easy way, if the son doesn't remember where it is.
- You can take a photo with the remote phone and you can receive the photo via email, and many other case of use that we'll see later

Attention: If the option “Send captured images...”, the App consumes some kilobytes of Internet Traffic to send you photos via email. The photos are in low resolution, then are really little (some kilobytes), then the Internet Traffic used is really low. In any case check your rate plan, and take into account this consumption. Active this option only when you need it.

Alarm – Movement Detection – GPS tracking

This functionality allows you to activate a Movement Detection, the Movement Alarm and the Siren Alarm.



When the Alarm is active, it shut the alarm with a frequency of 15 seconds. The Movement Detection functionality use an advanced algorithm to allows you to set the Movement Sensor with the max sensibility. Obviously, the sensor performance depends by the Sensor Quality of your Mobile.

This functionality has been tested with several phones: Samsung Note4, Samsung Note2, Samsung Note, Huawei P8 Lite, Samsung Galaxy S5 neo.

In some mobile phones when are in stand-by mode (Screen off), the movement sensor doesn't work. It's not a bug in Android itself, but rather a choice or bug of the hardware manufacturer. For this reason, in SMS Wipe there is an option to have the phone display always on when you need.

The Appendix A contains the list of the mobile phone with movement sensor woks properly and not.

Motion Detection: It is the switch to enable and disable the Motion Detection. When this option is enabled, the button “Run Sensor Auto-Calibration” is active else is inactive.



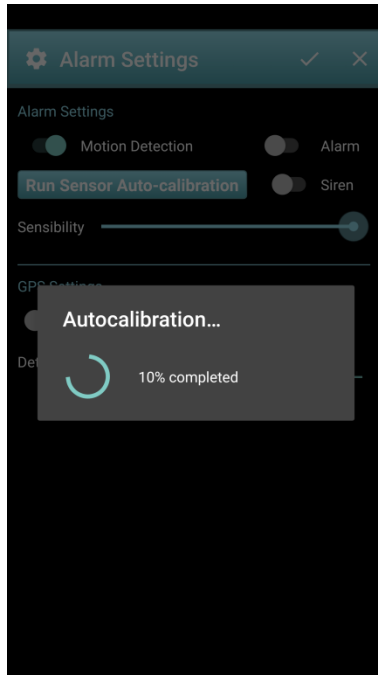
Alarm: This switch allows enabling and disabling Alarm. When it is enabled and a movement is detected then in the phone display appears the Alarm Dialog.

If the Camera Permission is enabled, then the app takes a photo using the Back Camera and the Flash is turn on and turn off two times to advice about the photo captures.

If your email settings are OK, then the photo is sent to you via email to advice you about the activation of the alarm.

Siren: If the switch “Siren” is enabled, the Siren sound is emitted with max volume.

To have the best sensor performance available with your mobile phone, press the button “Run sensor auto-calibration”, put the phone mobile over a rigid surface and press the “OK” button.



The auto calibration process starts. Do not touch or move the phone until the end of the process. You can repeat this process more times to increase the performance of the sensor. An advanced algorithm is used to have the best from your Movement Sensor (Accelerometer Sensor). It takes in consideration several parameters and the surface conditions.

To increase the sensor sensibility, you can remove the cover too, because could reduce the sensibility.

Case of use:

The test executed with Samsung Note 4 is really interesting. The sensor in this phone has really a good sensibility. You can detect the vibration of a surface. Then if you have a mobile phone with a good sensor, you can use it to detect:

- Earthquake detection: put the phone mobile horizontal over a surface that is sensible to the floor movement, and your phone will alert you if there is an earthquake. Could be useful when you are sleeping in a place where the earthquake is frequent.
- Security: put the phone over an object, like documents, that you want anyone touching, active the siren and the alarm. If someone tries to get the documents, the phone alarm shut, an email is sent to you, and the siren is activated.
- Antitheft: put the phone inside your bag, and if the bag is moved, the alarm is activated. You shall only set the Sensibility properly to your use.

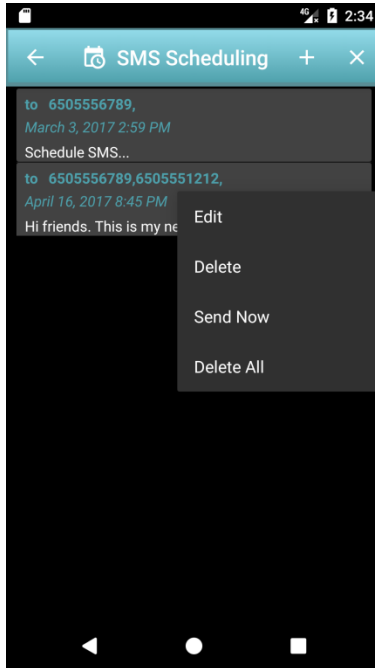
The cases of use are a lot, you shall only set the sensibility to your use and calibrate the sensor where you put the phone.

GPS Tracking: if you enable the GPS in your mobile phone and if the GPS tracking is enabled, a file is created in the external storage with the list of the positions. If the checkbox “Send each changing position via email” is checked, then you will receive an email every time that the phone changes position with the detection distance that you have set in the dialog. Besides, you can open the list of your position stored in the file: “emulated/0/SMSwipe/GpsTracing.csv”. You can move the file in your computer and open it with Microsoft Excel or Open Office, or you can install in your mobile phone WPS Office to see it.

Attention: If the option “Send each changing position via email”, the App consumes some kilobytes of Internet Traffic to send you the positions via email. The email contains only a short text, then are really little (some kilobytes), then the Internet Traffic used is really low. In any case check your rate plan, and take into account this consumption. Active this option only when you need it.

Schedule

You can schedule when you want to send an SMS.



In the Operative Center press the “Schedule” button.

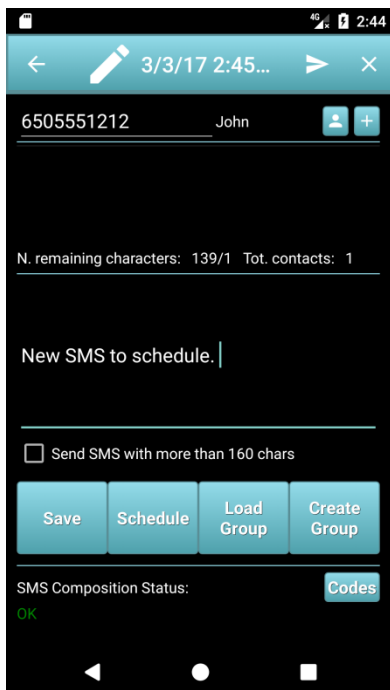
The “SMS Scheduling” dialog show you the SMS scheduled.

If you press with a long tap one of SMS scheduled, the context menu is opened.

If you press the icon “+” in the action bar you can create a new SMS to schedule.

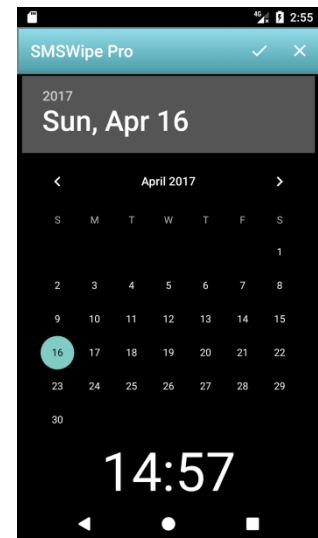
When an SMS is sent, it will disappear from the scheduled list.

After pressing “+” button appear the Dialog to compose the new SMS to schedule.



Schedule: When this button is pressed, it is opened the dialog to insert date and time for the scheduled SMS. Press the confirm button to save date and time and close the dialog.

Save: Save the new scheduled SMS. The new SMS is inserted in the list of the scheduled list.



Mobiles Control

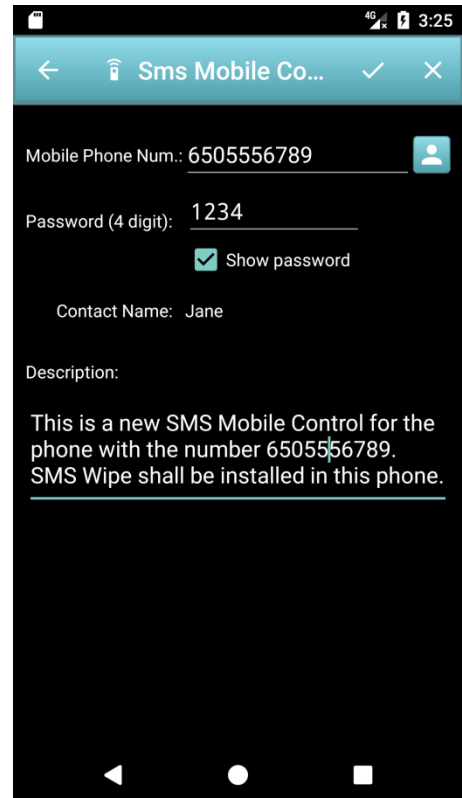
This functionality allows you to manage the Mobile Phones that you want controlling.

The Mobile Phone Control List contains only your Local Phone initially. If you press it, you can execute commands in your local phone.



Press "+" icon in the action bar to create a new Phone Remote Control.

The Dialog in the right "SMS Mobile Control" is opened to allow you to insert the data to control the Remote Phone.

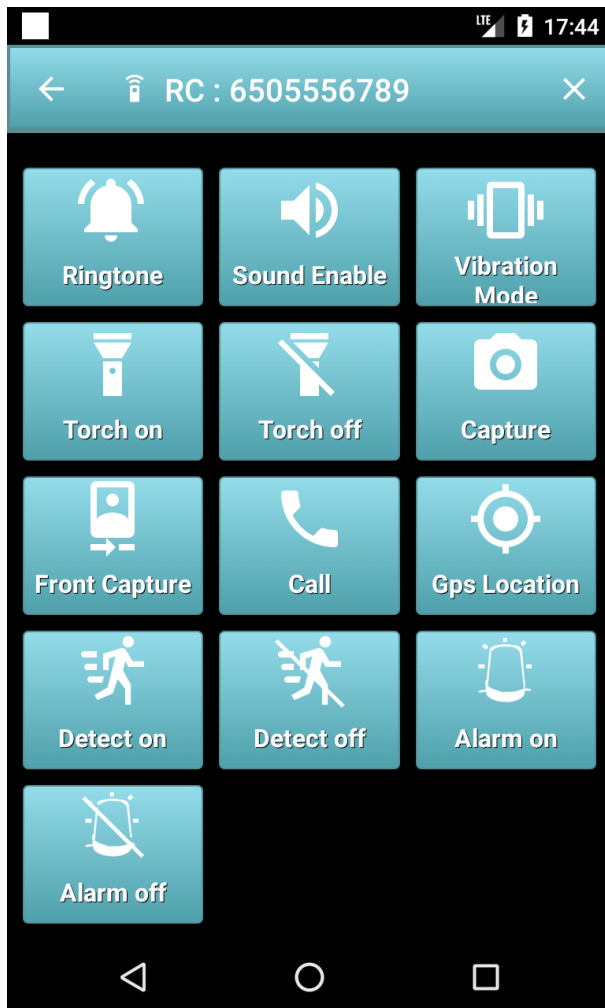


Mobile Phone Num.: This field shall contain the phone number of the phone to control.

Password (Pin with 4 digits): It's the password that you have set in the phone to control, then in the example the phone with the number 6505556789. In this phone SMS Wipe shall be installed and configured with a remote control password (pin) equal to 1234.

Description: It contains a brief description about the Remote Mobile Phone.

Remote Control Phone



Ringtone: This command allows you to make the remote phone ring.

Sound Enable: Enable the Sound in the remote phone.

Vibration Mode: Enable the Vibration Mode in the remote phone.

Torch On: Turn on the Flash to use it like a torch.

Torch Off: Turn off the flash.

Capture: Take a photo using the Back Camera and receive the photo to your email.

Front Camera: Take a photo using the Front Camera and receive the photo to your email.

Call: Execute a call with the Remote Mobile Phone. You need insert the number to use for the call.

GPS Location: Get the GPS Location of the Remote Mobile phone. You obtain the updated position only if the GPS is on in the remote phone.

Detect On: Turn on the Movement Detection in the remote phone.

Detect off: Turn off the Movement Detection in the remote phone.

Alarm On: Turn on the Alarm in the Remote phone.

Alarm Off: Turn off the Alarm in the Remote Phone.

You can run all these commands in any mobile phone, also without the SMS Wipe installed, but it shall be installed in the remote phone to control. In this case you shall send an SMS with the right content.

In the next paragraph, it will be explained how formatting the SMS to Execute the command in the remote phone.

Attention: For each remote command an SMS is sent to remote phone. Take into account that most Mobile Operators provides the SMS service to fee. The cost of each SMS depends by your Mobile Operator.

SMS Formatting

To execute a command using a simple SMS you shall send the SMS to the remote mobile phone with the proper content. In this paragraph will be explained the format of the SMS content for each command.

Ringtone Command – Command Code 100

The SMS content format is:

#100#1234#

100 is the Ringtone Command code to execute.

1234 is the PIN set in the Remote Phone to execute Remote Command.

Enable Ringtone – Command Code 101

The SMS content format is:

#101#1234#

101 is the Enable Ringtone Command code to execute.

1234 is the PIN set in the Remote Phone to execute Remote Command.

Disable Ringtone – Command Code 102

The SMS content format is:

#102#1234#

102 is the Disable Ringtone Command code to execute.

1234 is the PIN set in the Remote Phone to execute Remote Command.

Turn On Flash – Command Code 105

The SMS content format is:

#105#1234#

105 is the Turn On Flash Command code to execute.

1234 is the PIN set in the Remote Phone to execute Remote Command.

Turn Off Flash – Command Code 106

The SMS content format is:

#106#1234#

106 is the Turn Off Flash Command code to execute.

1234 is the PIN set in the Remote Phone to execute Remote Command.

Photo Capture – Command Code 110

The SMS content format is:

#110#1234#

110 is the Back Photo Capture Command code to execute.

1234 is the PIN set in the Remote Phone to execute Remote Command.

If your email is configured well, you receive an email with attached the photo.

Front Photo Capture – Command Code 111

The SMS content format is:

#111#1234#

111 is the Front Photo Capture Command code to execute.

1234 is the PIN set in the Remote Phone to execute Remote Command.

If your email is configured well, you receive an email with attached the photo.

Call Number – Command Code 115

The SMS content format is:

#115#1234#+000000000000#

115 is the Call Command code to execute.

1234 is the PIN set in the Remote Phone to execute Remote Command.

+000000000000 is the phone number that the remote phone shall call.

GPS location request – Command Code 120

The SMS content format is:

#120#1234#

120 is the GPS location Command code to execute.

1234 is the PIN set in the Remote Phone to execute Remote Command.

If your email is configured well, you receive an email with the GPS location of the remote phone. The position is updated only if the GPS is turn on in the remote phone.

Motion Detection – Command Code 130

The SMS content format is:

#130#1234#X#

130 is the Motion Detection Command code to execute.

1234 is the PIN set in the Remote Phone to execute Remote Command. (The default pin is 0000)

X is a digit value:

- if X=0 the Motion Detection will be disabled in the remote phone.
- If X=1 the Motion Detection will be enabled in the remote phone.

Example: write an SMS to phone number 6505556789 (with SMS wipe installed in the remote phone and whit remote phone pin set to 1234) with the content: #130#1234#1#

You enable the Motion Detection in the remote phone. If you have the remote phone pin set to the default (0000) then you shall write the content of the SMS like: #130#0000#1#

Siren – Command Code 131

The SMS content format is:

#131#1234#X#

131 is the Siren Command code to execute.

1234 is the PIN set in the Remote Phone to execute Remote Command. (The default pin is 0000)

X is a digit value:

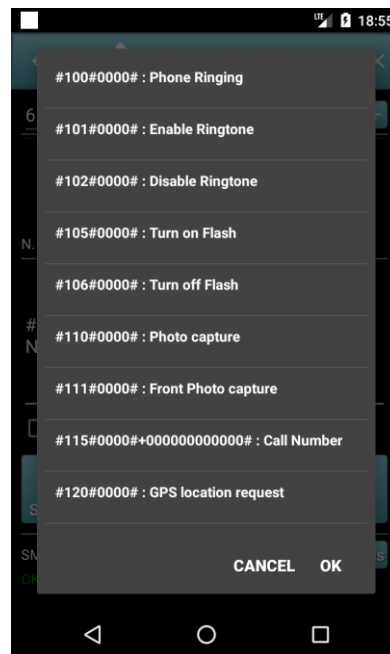
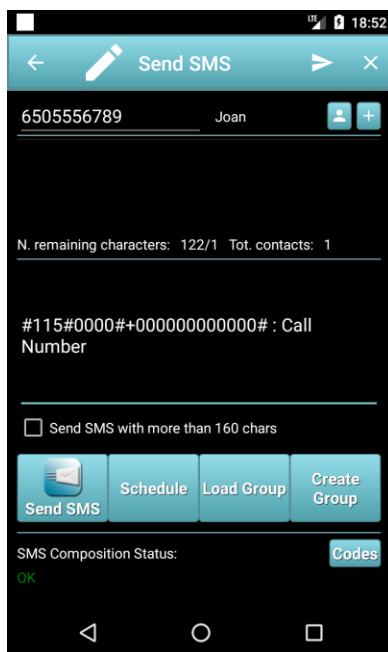
- if X=0 the Siren will be disabled in the remote phone.
- If X=1 the Siren will be enabled in the remote phone.

Example: write an SMS to phone number 6505556789 (with SMS wipe installed in the remote phone and whit remote phone pin set to 1234) with the content: #131#1234#1#

You enable the Siren in the remote phone. If you have the remote phone pin set to the default (0000) then you shall write the content of the SMS like: #131#0000#1#

SMS Codes

As an alternative to "Mobiles Control" panel, you can send the command codes with simple SMS. To facilitate the composition of these SMS, in the "SMS Write" dialog there is the button "codes" (see the figure below in the left). By pressing this button, you can select the command template you wish to send (see the figure below in the right), but you have to edit its parameters: pin, number, digit.



APPENDIX A -

Android Phones, Tablets and Watches which Receive Accelerometer Events in Standby (with the Screen Off)

Devices which Work

- Acer Iconia A500 - comment from George below
- Acer Liquid MT - comment from Rendón below
- Asus EEE Pad Transformer (v4.0) - own testing
- Google (LG) Nexus 4 - Comments below from DesmoDavid, H31vry5, Mobo, Michael and Fernando. Bjørn Ivar Knudsen commented that it doesn't work, but he seems outnumbered.
- Google (LG) Nexus 5 - Comment below from Romain Guidoux.
- Google Nexus 7 - Comment below from Michael
- HTC Droid Incredible 2 (v2.2.1) - <http://code.google.com/p/android/issues/detail?id=11028#c52>
- HTC Sensation (v4.0) - [Stack Overflow](#)
- HTC Sensation 4G (v2.3.3) - <http://code.google.com/p/android/issues/detail?id=11028#c51>
- Lenovo A2010 - comment from ladipro
- Lenovo A60 (sort of) - comment from ravemir below
- Lenovo A820 (MTK chipset) - comment from Llundru below. But another comment from Mark claims that it doesn't work.
- Lenovo S820 - comment from aanz below.
- LG Optimus 3D (P920) - comment from Arthur
- LG Revolution (v2.2.2) - <http://code.google.com/p/android/issues/detail?id=11028#c52>
- Motorola Cliq (v1.5) - <http://code.google.com/p/android/issues/detail?id=3708#c13> and (v2.2.2) <http://code.google.com/p/android/issues/detail?id=11028#c51>
- Motorola Droid 3 (v2.3.4) - <http://code.google.com/p/android/issues/detail?id=11028#c52>
- Motorola Droid Pro (v2.2.1) - <http://code.google.com/p/android/issues/detail?id=11028#c52>
- Nexus One (v2.2) - <http://stackoverflow.com/questions/2143102/accelerometer-stops-deliverin...>
- Samsung Captivate - [Stack Overflow](#)
- Samsung Charge (v2.2.1) - <http://code.google.com/p/android/issues/detail?id=11028#c52>
- Samsung Exhibit 4G (v2.3.3) - <http://code.google.com/p/android/issues/detail?id=11028#c51>
- Samsung Galaxy Express (v4.2.2) - comment from Miguel below. However, arie aardvarken comments that only the Express 2 works, not the version 1.
- Samsung Galaxy Nexus (v4.2.1 and 4.3) - Comment from Fernando below
- Samsung Galaxy S - (v2.2.1) <http://code.google.com/p/android/issues/detail?id=3708#c276> and <http://code.google.com/p/android/issues/detail?id=11028#c51>, but see also claims that it doesn't work: <http://code.google.com/p/android/issues/detail?id=3708#c186> and <http://code.google.com/p/android/issues/detail?id=11028#c21>
- Samsung Galaxy S2 Plus (cyanogenmod 11 - v4.4.2) (note that S2 is in not working list) - Comment from below Thomas K below.
- Samsung Galaxy S3 (v4.0) - own testing
- Samsung Galaxy S4 - comment from Steve below. Disputed by Ahmed Moharram who says "It is not working on Samsung S4 I9500 with KitKat."
- Samsung Galaxy S4 Mini - comment from Roberto.
- Samsung Galaxy S5 - comment from Miranda below.

- Samsung Galaxy S5 Mini - comment from Roberto.
- Samsung Galaxy Tab (v2.2) - <http://code.google.com/p/android/issues/detail?id=11028#c51>
- Samsung Galaxy W - comment from Roberto below.
- Samsung Galaxy XCover - comment from Arthur.
- Samsung Galaxy XCover 2 - comment from Roberto.
- Samsung Next Turbo S5570 - comment from Roberto below.
- Samsung Note 3 - comment from Nathan below.
- Samsung Sidekick (v2.2.1) - <http://code.google.com/p/android/issues/detail?id=11028#c51>
- Sony Xperia S (v2.3.7) - own testing
- Sony Xperia X10 (v2.1, see v2.3 below) - <http://code.google.com/p/android/issues/detail?id=3708#c273>
- T-Mobile Comet (v2.2) - <http://code.google.com/p/android/issues/detail?id=11028#c51>
- T-Mobile MyTouch 4G Slide (v2.3.4) - <http://code.google.com/p/android/issues/detail?id=11028#c51>
- Verizon 4G LTE (v2.2.2) - <http://code.google.com/p/android/issues/detail?id=11028#c52>

Android Phones, Tablets and Watches which do not Receive Accelerometer Events in Standby (with the Screen Off)

Devices which Don't Work Properly

- Alcatel Move - <http://code.google.com/p/android/issues/detail?id=3708#c276>
- Archos 101 tablet - comment from brans below.
- Asus Fonepad 7 - comment from mhiou below.
- Asus Memo Pad 7 HD - comment from Bii.
- Fairphone 1 - comment from Christian Majenz.
- Google Nexus One (v2.1) - <http://stackoverflow.com/questions/2143102/accelerometer-stops-deliverin...> and http://groups.google.com/group/android-developers/browse_thread/thread/8... (no version specified)
- Google Nexus 6 - comment from Paul Mohr
- HTC Aria (v2.1) - <http://code.google.com/p/android/issues/detail?id=3708#c178>
- HTC Desire (v2.2) - <http://stackoverflow.com/questions/6323757/how-to-keep-my-accelerometer-...> and http://groups.google.com/group/android-developers/browse_thread/thread/8... and <http://code.google.com/p/android/issues/detail?id=3708#c284> and many more.
- HTC Desire HD - <http://code.google.com/p/android/issues/detail?id=11028#c25>
- HTC Desire S - comment from raduz&co below
- HTC Desire Z - <http://code.google.com/p/android/issues/detail?id=3708#c247>
- HTC Droid Eris (v2.1) - <http://stackoverflow.com/questions/2143102/accelerometer-stops-deliverin...>
- HTC Droid Incredible - <http://code.google.com/p/android/issues/detail?id=3708#c136>
- HTC Evo - <http://stackoverflow.com/questions/2143102/accelerometer-stops-deliverin...>
- HTC Evo 4G (v2.2) - <http://code.google.com/p/android/issues/detail?id=11028#c8> and <http://code.google.com/p/android/issues/detail?id=3708#c282>
- HTC G1 - <http://code.google.com/p/android/issues/detail?id=3708>. Apparently it worked once, see http://groups.google.com/group/android-developers/browse_thread/thread/8...
- HTC Hero - <http://code.google.com/p/android/issues/detail?id=3708#c199> and lots more
- HTC Incredible - <http://code.google.com/p/android/issues/detail?id=3708#c251>

- HTC Legend (v2.2) - <http://code.google.com/p/android/issues/detail?id=3708#c275> and <http://code.google.com/p/android/issues/detail?id=3708#c237>
- HTC Magic - <http://code.google.com/p/android/issues/detail?id=3708>. Apparently it worked once, see <http://code.google.com/p/android/issues/detail?id=3708#c106>
- HTC One-M8 - According to arnon's comment below, "Sensors sample period on HTC One_M8 increased to more than 600msec as soon as the screen is turned off". So I guess that means that technically it works, but it is pretty useless for most applications.
- HTC One-S - comment from Amod below
- HTC Rezound - <http://code.google.com/p/android/issues/detail?id=11028#c70>
- HTC Tattoo - <http://code.google.com/p/android/issues/detail?id=3708#c60>
- HTC Thunderbolt (v2.2.1) - <http://code.google.com/p/android/issues/detail?id=11028#c52>
- Huawei Ascend g300 - Comment from E-Mud below
- Huawei Sonc U8650 (v2.3.3) - <http://code.google.com/p/android/issues/detail?id=11028#c64>
- Lenovo a3000 Ideatab - comment from raduz&co below.
- Lenovo a369i - comment from Thanh Cong below.
- Lenovo s820 - comment from aanz below.
- Lenovo K900 - comment from Nathan below.
- LG G100 Smartwatch - comment from chris.
- LG Optimus 2X (v2.3.4) - <http://code.google.com/p/android/issues/detail?id=11028#c65>
- LG Optimus Chic E720 (v2.2) - <http://code.google.com/p/android/issues/detail?id=11028#c45>
- LG Optimus L5 II (aka LG-E460) (v4.1.2) - anonymous comment.
- LG Optimus S - anonymous comment below
- LG Optimus T (v2.2) - <http://code.google.com/p/android/issues/detail?id=11028#c51>
- LG P970 - comment from brans below.
- LG P990 - [Stack Overflow](#)
- LG Phoenix - <http://code.google.com/p/android/issues/detail?id=11028#c55>
- Mediasonic MTP-710 - comment from bent below.
- Motorola Atrix 4G (v2.3.4) - <http://code.google.com/p/android/issues/detail?id=11028#c69>
- Motorola Atrix MB860 (v2.2.2) - <http://code.google.com/p/android/issues/detail?id=3708#c286>
- Motorola Droid (v2.0.1) - <http://stackoverflow.com/questions/2143102/accelerometer-stops-deliverin...>
- Motorola Droid X2 (v2.3.3) - <http://code.google.com/p/android/issues/detail?id=3708#c274>
- Motorola Milestone (v2.1) - <http://code.google.com/p/android/issues/detail?id=11028#c7>
- Motorola Photon 4G MB855 a.k.a. "ELECTRIFY" - Anonymous comment below
- Motorola Razr Maxx (xt910) - comment from Mehdi below
- Motorola Razri - comment from Destal below
- Samsung Galaxy Ace (GT-S5830) - comment from Chuong
- Samsung Galaxy Ace 2 (v2.3.6) - own testing
- Samsung Galaxy Ace 3 - comment from Miranda below
- Samsung Galaxy Mini (v2.3) - own testing
- Samsung Galaxy Note - Comment below from ish
- Samsung Galaxy Note 2 - Comment below from Reese. But Tino comments "Galaxy note 2 work with ditto note 3 rom with android 4.4.2. Today, with liquidsmooth and android 4.4.4 not work."
- Samsung Galaxy S Duos - Comment below from Sohlla
- Samsung Galaxy S2 (cyanogenmod 11 - v4.4.2) (note that S2 plus is in working list) - Comment from below Thomas K below.
- Samsung Galaxy Xcover 2 - Comment from Anton Moberg below

- Samsung Moment <http://code.google.com/p/android/issues/detail?id=3708#c56>
- Sharp IS01 - <http://code.google.com/p/android/issues/detail?id=3708#c183>
- Sharp Lynx - <http://code.google.com/p/android/issues/detail?id=3708#c183>
- Sony Xperia X10 (v2.3, see v2.1 above) - <http://code.google.com/p/android/issues/detail?id=3708#c273>
- T-Mobile 2X (v2.3.3) - <http://code.google.com/p/android/issues/detail?id=11028#c51>
- T-Mobile G-Slate (v3.0.1) - <http://code.google.com/p/android/issues/detail?id=11028#c51>
- T-Mobile G1 - <http://code.google.com/p/android/issues/detail?id=11028#c7>
- T-Mobile MyTouch 3G Slide - <http://code.google.com/p/android/issues/detail?id=3708#c196>
- ZTE Z667T (aka Zinger) - comment from ladipro

APPENDIX B – SMS Wipe Free: Functionality Limitations

The ZAMAX Production approach, it is to produce App always without Ads. But, to develop this App we work a lot of months, then for these reasons we need your support to continue to develop this App.

The reason of this choice is simple. Much times, people install app with Ads, and sometimes when they tap over these Ads, they pay money without really clear information, and in case of young people, but not only, this behavior could be really dangerous and unsecure.

Besides, advertisements may be of questionable products, and in any case they fill your phone screen with useless information. Then we prefer to publish the App with a low price, despite the many features offered and the really hard work to realize the App.

The App is published in Google Play Store in two versions:

- Free Version: with all basic functionality available
- Pro Version: with full functionalities

SWM Wipe Free Version – Limitations

Full Backup and Restore: disabled

Import and Export: disabled

Remote commands: For demo you can run this functionality 5 times.

Mobile Control Dialog: You can add only one Phone Mobile for remote control.

Send SMS: The delivery list can contain a maximum of 2 contacts.

Alarm Motion Detection: For demo you can enabled the Alarm Motion Detection 5 times.

GPS Tracking: For demo you can enabled the GPS Tracking 5 times.

Login with password for Dialog Remote Control Settings and Forwarding Email Settings: disabled: in the “Remote Control Settings” Dialog the checkbox “Remote Control Settings Protected by Password” is always disabled.

SMS List Dialog: You can delete only 2 SMS at a time.

SMS Forwarding: For demo only 4 SMS are forwarding to your email.

SMS Autoreply: For demo you can send a maximum of 5 autoreply SMS.

SMS to Mobile: For demo you can send a maximum of 5 forwarding SMS to another mobile phone.

SMS scheduling: Max numbers of Scheduled SMS is 2.

Please, if you are interested, buy the Pro Version, and you support the future developing of the App.

APPENDIX C – Mobile Permissions Requested

The App requests the following permissions:



Identity

- find accounts on the device

Used to check your phone number and to avoid infinite loop in autoreply functionality.

Not always It is possible get your number from the phone, then I suggest you to insert your phone number in the “SMS Autoreply Settings” Dialog.



Contacts

- find accounts on the device
- read your contacts
- modify your contacts

Used to retrieve your phone contact to compose the SMS.



Location

- approximate location (network-based)

Used for GPS tracking and Movement Detection functionality.



SMS

- read your text messages (SMS or MMS)
- receive text messages (SMS)
- send SMS messages
- edit your text messages (SMS or MMS)

Used to write and to receive SMS.



Phone

- directly call phone numbers
- read phone status and identity

Used to call an SMS sender.



Photos/Media/Files

- read the contents of your USB storage
- modify or delete the contents of your USB storage

Used to save the GPS positions and the Photo Captures of the functionalities: GPS tracking and Remote photo capture, and the photo capture when the Alarm starts.



Storage

- read the contents of your USB storage
- modify or delete the contents of your USB storage

Used to save the GPS positions and the Photo Captures of the functionalities: GPS tracking and Remote photo capture, and the photo capture when the Alarm starts.



Device ID & call information

- read phone status and identity

Used to check your phone number and to avoid infinite loop in autoreply functionality.



Other

- change system display settings
- full network access
- change your audio settings
- modify system settings
- Google Play license check

For License managements, Internet Access, Audio Settings, Send Emails to you.



Camera Permissions

- Take photo with back and front camera

Used to take photos using remote controls or when the Alarm is activated.

APPENDIX D – Privacy and Legal Terms

Privacy Policy

In this section we describe the modalities for APP management regarding handling of personal data collected from the user. Data will be collected and handled according to Recommendation number 2/2001, adopted on May 17, 2001 by the European Authorities for the protection of personal data, in order to identify common minimum requirements for App collection of personal data within the European Union. Also, this Recommendation supplies added information on the subject, according to Article 13 of Law Decree dated June 30, 2003, number 196 – Codex, in the matter of personal data protection. This information refers only test scope. Ownership and responsibilities regarding handling of personal data Zamax Production has Ownership of Personal Data Handling. User's personal data are not shared with other individuals, but only used to run the App properly, and to manage the Errors and Warnings case of the App. Data will be handled through instruments and with modalities that ensure data privacy and security, in accordance with provisions of Law Decree dated June 30, 2003, number 196. In case the User should decide to utilize the App, in any way, he/she will assume total and complete responsibility for such action. The Owner will be held harmless for the instrumental handling of data consequent to said communication or dissemination. Zamax Production declares its commitment to keep and control all data automatically gathered by the App or voluntarily supplied by the User in such a manner and with such measures as to reduce to the minimum all risks relating to destruction, loss, unauthorized access, not permitted or inappropriate handling of said data for objectives that are inconsistent with the original purpose of their collection. Data handling outside the European Union As per articles 43 and 44 from Law Decree dated June 30, 2003, number 196, and articles 25 and 26 from Directive 95/46/CE by the European Parliament and Council, dated October 24, 1995, personal data handling may take place in a Country that is not a European Union member only if said non-member Country can guarantee an adequate level of protection and safety. For this reason, Zamax Production guarantees services from suppliers that conform to protection protocols for data safety, such as "Safe Harbor", that is, a bilateral agreement between EU and USA that defines safe and shared rules for personal data transfer to companies located in the US. Rights of the parties involved In order if you accept these conditions, please install the App, if not uninstall the App by your Mobile Phone.

Legal Terms

Zamax Production is not responsible for an illegal use of the App.

Zamax Production is not responsible about loss of data, Mobile Phone Malfunctions or any type of damages arising from the use or misuse of this app.

By using this App, you agree to these terms.

By using the Services or Software you agree to the terms of the Privacy Policy.

Zamax Production remain the sole owner of all right, title, and interest in the Services and Software. We reserve all rights not granted under these terms.

We recommend that you continue to back up the mobile phone data regularly, so to have always a backup of your data.

You are responsible for all activity that occurs via this app.

The Software, content, and your use of the Software, are subject to international laws, restrictions, and regulations that may govern the import, export, and use of the Software and content. You agree to comply with all the laws, restrictions, and regulations.

We may modify these terms or any additional terms that apply to the Software to, for example, reflect changes to the law or changes to our Software. You should look at the terms regularly. We will post notice of modifications to these terms on this manual and in the web site "<https://smswipe.wordpress.com/>". We will post notice of modified additional terms in the applicable Software. By continuing to use the Software after the revisions come into effect, you agree to be bound by the revised terms.

We respect the Intellectual Property Rights of others and we expect our users to do the same.

Accelerometer; 18; 27; 28

Alarm; 2; 3; 4; 10; 17; 22; 31; 33

Attention; 3; 6; 8; 12; 13; 14; 15; 18; 22

Case of use; 11; 13; 15; 18

Control; 2; 3; 7; 10; 11; 15; 21; 22; 26; 31

Detection; 3; 10; 17; 22; 25

filtering; 3

Filtering; 2; 5

folder to filter; 5

Free Version; 31

Full Backup and Restore; 3; 31

Functionality Limitations; 31

Send; 3; 8; 9; 15; 18; 31; 33

Settings; 2; 3; 7; 10; 11; 15; 31; 32; 33

SMTP; 11; 12